



QSD2216

User's Manual



Contact US:

Q-see Products

8015E. Crystal Dr
Anaheim, CA92807

Website:

<http://www.q-see.com>

Customer Service:

Phone:877-998-3440 x 538

Email: cs@dpsi-usa.com

Tech Support:

Phone: 877-998-3440 x 539

Email: ts@dpsi-usa.com

Fax:

714-998-3509

Rev 031608

Safety Precautions



The lightning flash with arrowhead symbol, within an equilateral triangle, is intended to alert the user to the presence of insulated dangerous Voltage within the product's enclosure that may be sufficient magnitude to constitute risk of electrical shock to persons.



The exclamation point within an equilateral triangle is intended to alert the user to the presence of important operation and maintenance (servicing) instructions in the literature accompanying the appliance.



Attention: installation should be performed by qualified service Personnel only in accordance with the National Electrical Code or applicable local codes.



Power Disconnect. Units with or without ON-OFF switches have power supplied to the unit whenever the power cord is inserted into the power source; however, the unit is operational only when the ON-OFF switch is the ON position. The power cord is the main power disconnect for all unites.



CAUTION: Danger of explosion if battery is incorrectly replaced. Replace only with the same or equivalent type recommended by the manufacturer. Dispose of used batteries according to the manufacturer's instruction.

Warranty
and Service

During the warranty period (one year for Hard Disk), we will repair or replace the hard disk free of charge.

Be sure to have the model number, serial number and vendor stick on hard disk for service representative.

About this document

Before installing stand alone DVR, be sure to thoroughly review and follow the instructions in this Users Manual. Pay particular attention to the parts that are marked **NOTICE**.

Also, when connecting with external application, first turn the power OFF and follow manual instruction for appropriate installation.

Before reading this document

1. This document is intended for both the administrator and users of this stand alone DVR Model.
2. This manual contains information for configuring, managing and using this stand alone DVR Model.
3. To prevent fire or electrical shock, do not expose the product to heat or moisture.
4. Be sure to read this manual before using this stand alone DVR Model.
5. For questions and technical assistance of this product, contact Q-see.

► Strong recommendation on installation of the DVR unit

1. Verify that the electricity at the place you want to install the DVR unit is stable and meets our electrical requirements.
Unstable electricity can cause malfunction of the unit or cause critical damage to the unit.
Notice: We also STRONGY recommend that you plug the DVR and cameras into a Transient Voltage Surge Protector (UL-1449 rating). Look for a clamping voltage of 330 or lower, Joule rating of at least 400, and a response time of 10 nanoseconds or less.
2. Several chips on the main board of the DVR unit and hard drive inside the unit generate heat and it must be properly discharged.
Do not put any objects near the exhaust port (fan) on the left side of the unit and do not block the opening (fresh air in-take) on the right side of the unit..
3. Put the DVR unit in a well-ventilated place and do not put heat-generating objects on the unit. When it is installed inside 19 inch mounting racks together with other devices check that the built-in ventilation fan of the rack is properly running.

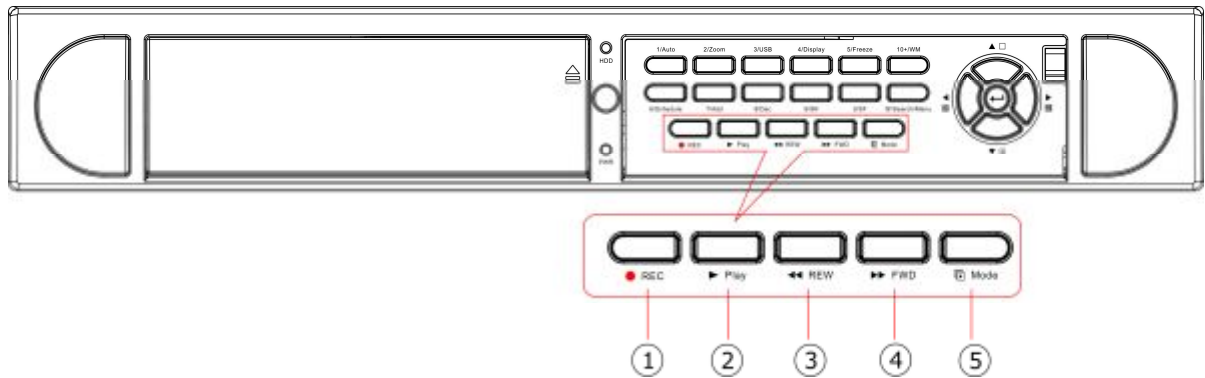
CONTENTS

1. FEATURES AND FUNCTION.....	5
2. UNIT DESCRIPTION OF FRONT PANEL.....	6
3. REAR PANEL AND SYSTEM CONNECTION.....	8
4. REMOTE CONTROL.....	12
5. SYSTEM SETUP.....	12
5.1. SETUP MENU.....	12
5.2. SYSTEM SETUP.....	14
5.2.1. TIME/DATE SET.....	14
5.2.2. HDD FORMAT SET.....	15
5.2.3. FACTORY RESET.....	15
5.2.4 CHANGE PASSWORD.....	16
5.2.5 FIRMWARE UPDATE.....	17
5.3. DISPLAY SETUP.....	18
5.3.1. CAMERA NAME SET.....	18
5.3.2. COLOR SET.....	19
5.3.3. AUTO SEQUENCE SET.....	20
5.4. RECORD SETUP.....	20
5.4.1. AUDIO CH SET.....	21
5.4.2. REC CH SET.....	22
5.4.3. RECORD LENGTH SET.....	22
5.5. NETWORK SETUP.....	22
5.5.1. NW ENABLE SET.....	23
5.5.2. MAC SET.....	24
5.6. SENSOR SETUP.....	24
5.6.1. MOTION DETECTION SETTINGS.....	25
5.6.2. MOTION AREA SET.....	26
5.7. SCHEDULE SET.....	27
5.8. USB BACKUP.....	27
5.9. STORAGE INFO.....	28
5.10. PTZ SET.....	28
6. QUICK USER GUIDELINE.....	29
7. USING THE NETWORK VIEWER.....	38
8. MAIN STANDARD & PARAMETER CHART.....	44
9. TROUBLE SHOOTING GUIDE.....	45
10. RECORD TIME TABLE.....	47
11. INTERNET VIEW/PLAYBACK CONFIGURATIONS.....	48
Q-SEE PRODUCT WARRANTY.....	51

1. FEATURE AND FUNCTION

- Video input: 16channels; Video output: 3channels.
- Audio input: 4channels; Audio output: 2channels.
- 16 alarm input and 1 relay alarm output.
- Compression mode: M-JPEG.
- Support network view.
- Support USB backup.
- Compatible with NTSC and PAL format.
- Support zoom, auto function, watermark security.
- Four optional levels of image quality: very high, high, low, very low. Record and play-back frame rate are changeable.
- Support alarm recording, time recording.
- Support video loss and motion detection functions.
- Multi-function searches: be able to distinguish different alarm records and time records from ordinary records; be able to search by time, by segment or by event.
- Support various playback modes: pause, several fast forward and backward play modes.
- Equipped with remote device and PTZ control enables (RS485).
- Triplex operation can play back and search while it is recording.
- 480frame (NTSC, PAL is 400) per second for view, 120frame (NTSC, PAL is 100) per second for recording.
- SATA Hard Disk Interface, support Over 500G Byte.

2. UNIT DESCRIPTION OF FRONT PANEL



2.1 Recording/Playing Control Buttons Area

1. **REC**: It is manual recording button. Press this button to record video to hard disk, Re-press this button, it will stop recording. So, this button is the switch button of manual recording and stopping recording operation, recording and stop will work simultaneously on 16 channels. This button doesn't work in schedule mode.

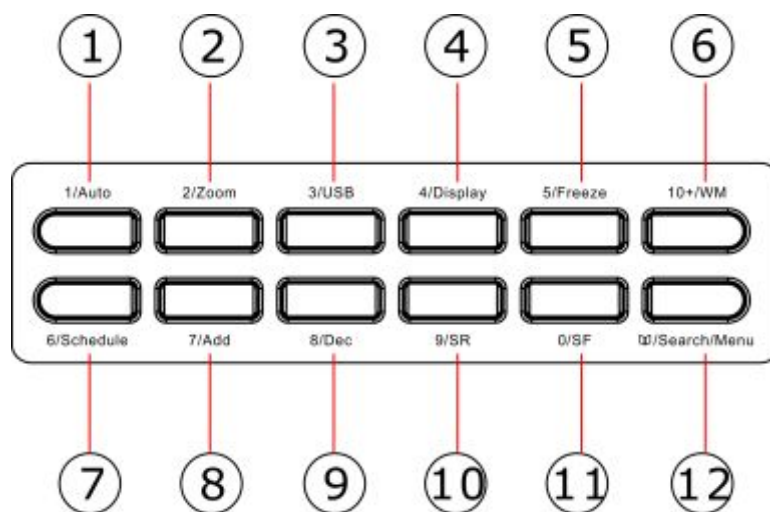
2. **PLAY**: Press this button to start playing the video stored in hard disk, re-press this button, it will stop playing. So, this button is the switch button of playing video and stopping playing operations. Play and stop will work simultaneously on 16 channels. This button doesn't work while time recording and alarming recording.

3. **REW**: fast backward button. Press this button to start fast backward playing till press play button to start normal playing.

4. **FORWARD**: fast forward button. Press this button to start fast forward playing till press play button to start normal playing the fast forward has five speeds; each time you press the button will change the speed from slow to fast and then back to slow.

5. **MODE**: mode change key, press this key to change to shift mode, re-press to change to normal mode.

2.2 Function Control Area

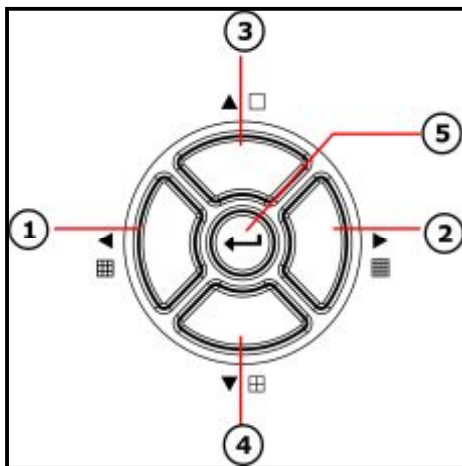


- 1. Auto/1:** Auto key, in shift mode, press this button, The DVR will be in auto dwell state, it dwells according to the time set in auto sequence set menu, and you can set the dwell time of each channel. Press this button to quit this mode. If not in shift mode, press this button to see big picture of channel 1. While inputting numbers, this button is used as number key of "1".
- 2. Zoom/2:** Zoom key, in shift mode, press this button, the DVR will be in zoom mode, please refer to zoom operation in user guideline for details, press zoom button again to cancel zoom operation. If not in shift mode, press this button to see big picture of channel 2. While inputting numbers, this button is used as number key of "2".
- 3. USB/3:** USB key, in shift mode, press this button, the DVR will start USB backup, please refer to USB backup operation in user guideline for details, press USB button again to cancel USB backup. If not in shift mode, press this button to see big picture of channel 3, while inputting numbers, this button is used as number key of "3".
- 4. Display/4:** Display key, in shift mode, press this button to display current information on the screen, press again this to clear the information display. If not in shift mode, press this button to see big picture of channel 4. While inputting numbers, this button is used as number key of "4"
- 5. Freeze/5:** Freeze key, in shift mode, press this button, the DVR will be in freeze mode, please refer to freeze operation in user guideline for details, re-press this button to quit freeze mode, If not in shift mode, press this button to see big picture of channel 5. While inputting numbers, this button is used as number key of "5".
- 6.WM/10+:** Watermark button, In shift mode, if the DVR is playing video, you can press this button to see the watermark of the picture, if the video was recorded by this DVR and has not be changed, there will be a watermark symbol in each picture, press watermark key again to clear the display. If not in shift mode, press this button and then press 1 to 6 to see big picture of channel 11 to channel 16.
- 7. Schedule/6:** Schedule key, in shift mode, press this button to enter schedule state, if the DVR is in schedule state, there will be an "S" symbol on screen, press again this button to quit schedule mode. If not in shift mode, press this button to see big picture of channel 6. While inputting numbers, this button is used as number key of"6"
- 8. ADD/7:** Add key, press this button to see big picture of channel 7. When in system setup menu, this is an increase button. While inputting numbers, this button is used as number key of "7".
- 9. DEC/8:** Decrease key, press this button to see big picture of channel 8. When in system setup menu, this is a decrease button. While inputting numbers, this button is used as number key of"8".
- 10. SR/9:** Single frame rewind button, in shift mode, while in playback state, long press this button can see single frame rewind, press play button to play normally. If not in shift mode, press this button to see big picture of channel8.while inputting numbers, this button is used as number key of"9".

11. SF/0: Single frame forward button, in shift mode, while in playback state, long press this button can see single frame forward, press play button to play normally. If not in shift mode, press this button to see big picture of channel 10.while inputting numbers, this button is used as number key of"0".

12. Search/Menu: press this button to enter search menu, please refer search play in user guideline for details. Long press this key to enter menu (need password), in menu setup, press this key to quit current menu.

2.3 Channel Choosing Control Area



1. Nine pictures/left: Press this button to see nine pictures display, re-press this button to see eight pictures. While select menu items, press this button to move the cursor left ward.

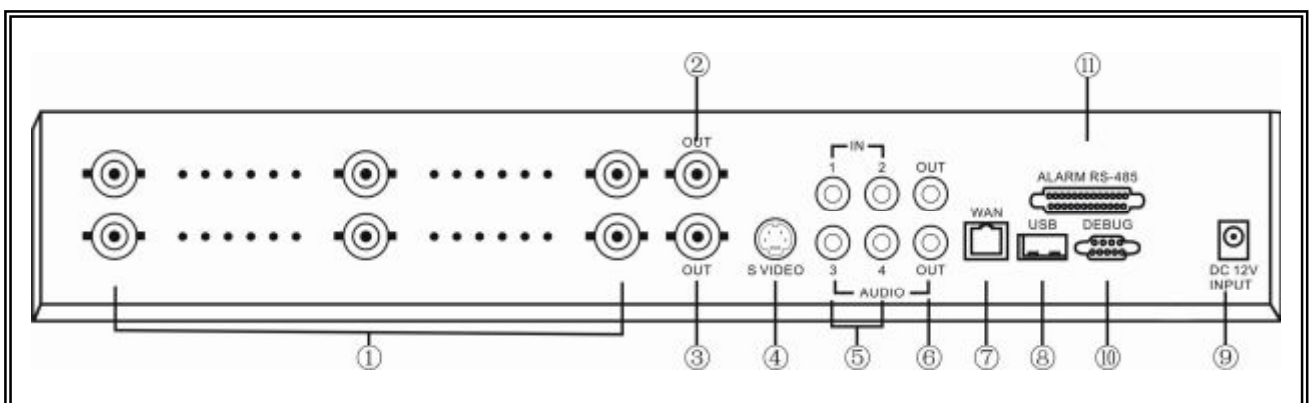
2. Sixteen picture/right: Press this button to see sixteen pictures display, re-press this button to see thirteen pictures. While selecting menu items, press this button to move the cursor rightward.

3. Big picture/up: Press this button to see full screen, re-press this button to see the next channel. While selecting menu items, press this button to move up the cursor.

4. Four pictures/down: Press this button to see four pictures display, re-press this button will display next four pictures. While selecting menu items, press this button to move down the cursor.

5. Enter: While selecting menu items, press this button to select the item. While playing video, press this button to pause the play, press play button to continue play.

3. REAR PANEL AND SYSTEM CONNECTION



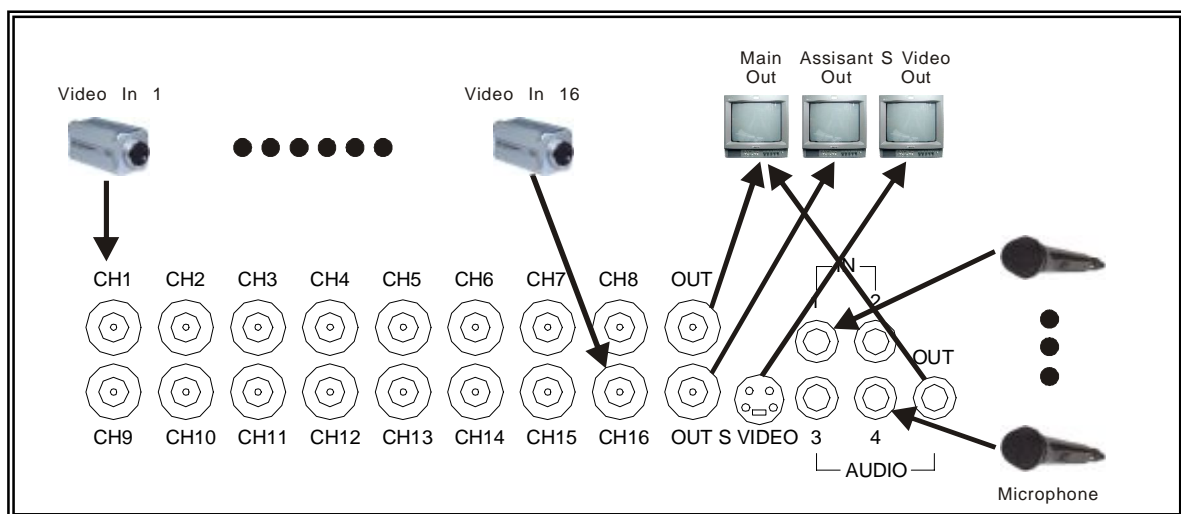
3.1 Back panel and connection terminals

The power cable and input, output signal terminals are all at the back of the machine, the connection to monitor, camera etc equipments are all carried out through the terminals and sockets on the back panel the back view of the machine is illustrated as below. Each part of the back panel is illustrated as below:

1. Video input CH1-CH16
2. main output
3. assistant monitor
4. S-VIDEO
5. audio input
6. audio output
7. net interface
8. USB port
9. power
10. debug port
11. Alarm and RS485 ,port define: (1-12: sensor1-sensor12; 13, 20, 24, 25: GND, 14-17: sensor 13-sensor16, 18: RS485A 19: RS485B, 21: COM 22: NC 23: NO)

3.2 Video and Audio Connection

The DVR can support up to 16 cameras video input at the same time.



The DVR can connect 4 channel's audio input, but you can only select one for recording. To display the DVR picture, the DVR video output signal should be transferred to your TV set or monitor. Any TV set that has a "video input" terminal is suitable for displaying the image. The figure above shows the video and audio signal line connection.

Notice: you can only connect one audio input at any one time, which means, if you connect an audio input to CH1, you cannot connect any to CH2 through CH4.

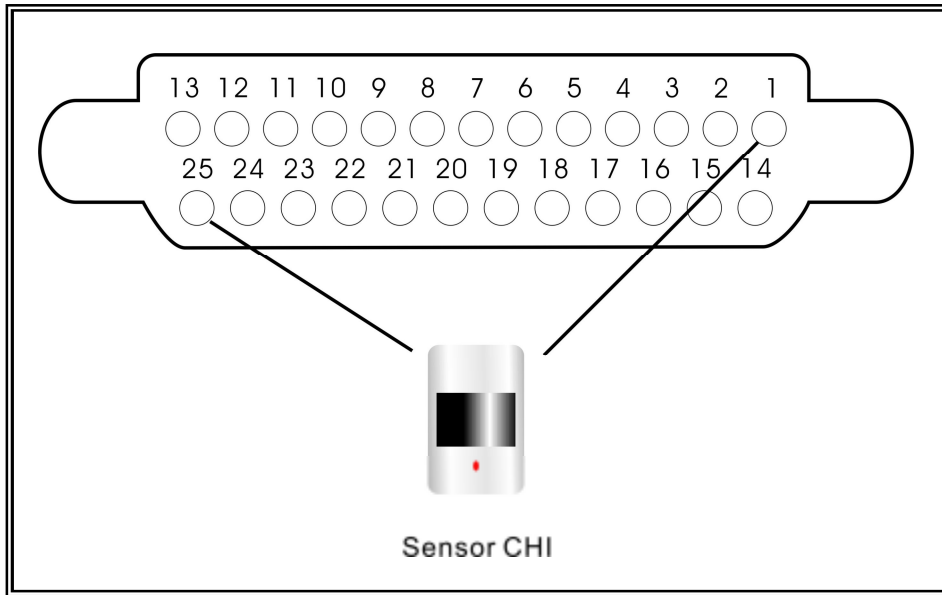
3.3 Alarm Connection

The DVR can support up to 16-alarm input and 1 alarm output.

Alarm input: there are two types of alarm input.

1. Voltage output (5V and 0V)
 - A: In case sensor output high voltage (5V) normally and output low voltage when triggered (0V), then users must set DVR as low voltage alarm.
 - B: In case sensor output low voltage (0V) normally and output high voltage when triggered (5V), then users must set DVR as high voltage alarm.

Please refer to the picture below, channel 2 to channel 16 are the same as channel 1.

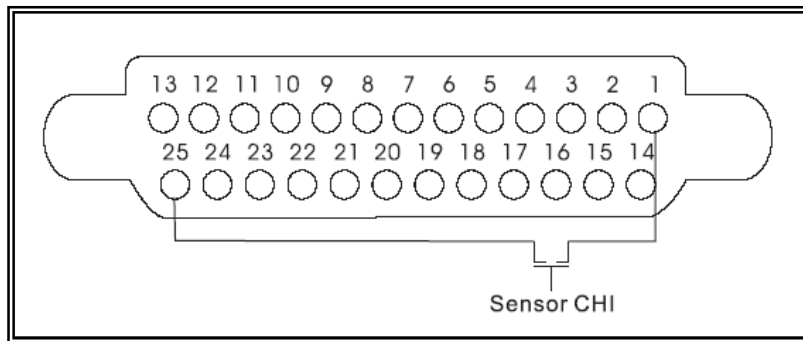


2. Open/Close output

A: N.O. Normal open, close when triggered. DVR must set as low voltage alarm.

B: N.C. Normal close, open when triggered. DVR must set as high voltage alarm.

Please refer to the picture below, channel 2 to channel 16 are the same as channel 1.

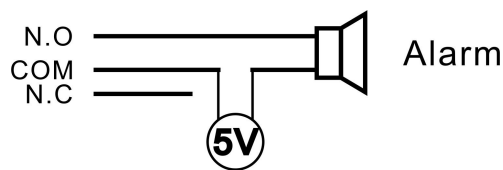


Alarm output:

There are three alarm output pin, the status of these pin are illustrated as below








There is an example for alarm output connection



3.4 Hard Disk Connection

There are processing to install the hard disk.

Note: If the DVR comes with a HDD pre-installed then skip the following steps.

<p>1. Pull out the hard drive rack from DVR side panel.</p> 	<p>2. Connect the DATA cable & power cord.</p> 
<p>3. Open the top cover of the drawer.</p> 	<p>4. Close the top cover of the drawer and put the hard drive drawer back into the DVR.</p> 
<p>5. Lock the hard drive draw by turning the key clockwise.</p> 	

If you have another HDD, please jump that HDD to SLAVE, and open then machine, put the HDD to the HDD rack, and then connect the power cord and DATA cable.

4. REMOTE CONTROLLER

0 – 9, 10+: Select the channel (Full screen)
2x2: 2x2 Screen Modes
3x3: 3x3 Screen Modes
4x4: 4x4 Screen Modes
USB: USB Storage Backup
AUTO: Auto Sequence Mode
ZOOM: 2X Zoom
FREEZE: Freeze
DISPLAY: Hard Disk Information
MENU/EXIT: System Setup
SEARCH: Time Search, Event Search and Start Stop Search
ENTER: Enter Next Menu
REC: Record
WM: Watermark set
PTZ: Control Speed dome

5. SYSTEM SETUP

Before using the video recorder, the first step is to set up the system according to user's needs; otherwise the machine will run with the default settings.

5.1 SETUP MENU

When in setup mode, press upward button or downward button, the cursor will move among the settable items, continuous pressing will make the cursor move among the options one by one, and it can recur. The selected one will display in yellow color.

While choosing digital fields, e.g. year, month, day, hour, minute, second etc, press leftward button or rightward button, the cursor can move leftward or rightward among the several digits of one field, continuous pressing will make it move among digits one by one, and it can recur.

Please press leftward or rightward button to change the value that the cursor on, Press "ENTER" button to enter sub menu and press menu button to return to previous menu.

Long press the menu/search button on the keyboard or press the remote controller to enter the Setup Main Menu. You can show password input box according setting of password set. If you fault password input 3-times, then you can't enter the setup menu. Default password is "0000",



If you enter the correct password, the main menu will display as below.



5.2 SYSTEM SETUP

Press "ENTER" button to enter sub menu



PLAY REPEAT: Set the Playback Repeat

VIDEO SYSTEM: Set the NTSC/PAL

BUZZER SOUND: Set the Buzzer On/Off

5.2.1 TIME/DATA SET

Set the date and time.



DATE: Set the date

TIME: Set the time

FORMAT: Set the time display format (USA, EURO and Asia Users)

DISPLAY: Set the time display on/off

LOCAL: Set the time display position

5.2.2 HDD FORMAT SET

Format the hard disk.



Select "YES", to format the hard disk. And all video on the HDD will loss.

5.2.3 FACTORY RESET

Initialize all the setup; the DVR will reset to factory default settings.



5.2.4 Change Password

When the cursor moves to CHANGE PASSWORD, please press the enter button, and the Change Password window will appear.



Password Level: password type of the DVR, the DVR has various types of password:

SETUP: If set to "YES", you have to input password to enter menu.

SYSTEM: If set to "YES", you have to input password to boot the DVR.

ALWAYS: If set to "YES", you have to input password to all operation.

If you select the Password Change and press the Enter button, the Password change window will display as below:



Please enter the current password, then input new password and confirm the password.

5.2.5 Firmware Update

When the cursor moves to FIRMWARE UPDATE, please press enter button, and the firmware update window will appear.



Update Method: There are two methods to update the DVR firmware, USB (for USB thumb drives) and Network (not support)

USB update: create a new folder named "firmware" in the USB thumb drive's root directory, copy the update file to the folder, and plug in the USB thumb drive. Enter the Firmware Update menu, select Update Start and press enter button, the system will start updating. When updating is finished, the window below will be displayed, please manually reboot the DVR.



5.3 DISPLAY SETUP



BOUND COLOR: Set the Color of Video Boundary (BLACK / WHITE / GRAY).

BLANK COLOR: Set the Background Color of Loss Video (BLACK / WHITE).

5.3.1 CAMERA NAME SET

When the cursor moves to Camera Name, please press the Enter button, the Camera Name Setup window will appear.



Press the up or down button to select channels, press the Enter button to change the channel name.



Each channel's name is a combination of six eight characters. Press up or down button to select each character, press LEFT or RIGHT button to modify each character, and then press enter button to save this name.

DISPLAY: if Display is set to "OFF", the channel's name will not display on the screen.

5.3.2 COLOR SET

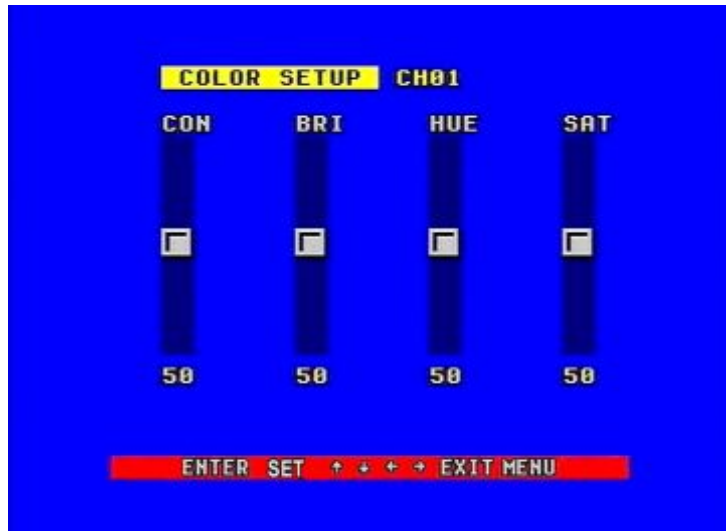
When the cursor moves to Color Set, please press the Enter button, the Color Setup window will appear.

CON: picture contrast

BRI: picture brightness

HUE: picture hue

SAT: picture saturation



Press LEFT or RIGHT button to select CON/BRI/HUE/SAT, press UP or DOWN button to change the value, if setup over, press UP or DOWN button to change channel.

5.3.3. AUTO SEQUENCE SET

When the cursor moves to Autoseq Set, please press enter button, the Auto Sequence Setup window will appear.



Press the UP or DOWN button to select channel, press LEFT or RIGHT button to change the auto Sequence time.

5.4 RECORD SETUP

When the cursor moves to Record Set, then press the Enter button, the Record Setup window will appear, which is illustrated as below. Press UP or DOWN button to move the cursor. Then press the LEFT or RIGHT button to change the value. While the DVR is in recording or playback mode, you cannot access this menu unless you stop record or play first.



OVER WRITE: if set to “YES”, the DVR will automatically overwrite the HDD from the beginning when the HDD is full. If set to “NO”, the DVR will automatically stop recording when the HDD is full. If there are two HDD in the DVR, when the MASTER HDD is full, the video will store to the SLAVE HDD, and when the SLAVE HDD is also full, the DVR will overwrite the MASTER HDD if set this to “YES”, otherwise it will stop recording.

REC SPEED: the recording frame rate of the DVR, factory default setting is 30F/SEC under NTSC (25F/SEC under PAL). This means the DVR records the events at the speed of 30 shots of frames per second. The higher of the record frame rate, the more natural look will be displayed on the screen when you playback the footage. The lower of the record frame rate, the more you can save the space on the hard disk. The highest frame rate is 120F/SEC(PAL is 100F/SEC) when the resolution is in CIF mode

REC QUALITY: There are four different video quality settings: LOW, LOW+, HIGH, HIGH+. The higher of the video quality, the clearer images you can get when you playback. The lower of the video quality, the more you can save the space on the hard disk drive.

RESOLUTION: the record picture size of the DVR have two modes:CIF and FIELD, default is CIF. In FIELD mode, the recorded picture is twice the size of that in CIF mode. In CIF mode the REC speed is 120F/SEC NTSC (PAL is 100F/SEC) and the maximal REC speed in FIELD mode is 60F/SEC NSTC (PAL is 50F/SEC).

PB SPEED: the frame rate of playback, default is AUTO, which means the same as record.

5.4.1 AUDIO CH SET

When the cursor moves to Audio CH Set, press the Enter button, the Audio CH Set window will appear, as illustrated below.

There are four audio input channels, for each channel you can select anyone of the 8 channels. Although there are four audio input channels, you can only record from one channel's audio at the same time. To setting the audio correctly, you have to select one channel within these four channels in the Audio Select menu.



5.4.2 REC CH SET

When the cursor moves to REC ch Set, please press enter button, the REC ch setup window will appear. This screen is different for CIF and FIELD modes . In FIELD mode, the window is illustrated as below, press UP and DOWN buttons to select channel and press LEFT or RIGHT button to change the setting, if the channel is set "OFF", this channel will not record when in recording mode. If the resolution is set to "CIF ", the REC ch Setup window can not be setup.



5.4.3 RECORD LENGTH SET

To set the file package time in continuous time record mode

5.5 NETWORK SETUP

When the cursor moves to Network Set, press the Enter button, and the network setup window will appear. Please note if the Netviewer software is connected to the DVR. You cannot access this menu unless you close the Netviewer software.



IP MODE: the DVR has 2 IP modes, STATIC IP and DHCP, if you select STATIC IP, you can set the IP address manually, if you select DHCP mode, the DVR will automatically get the IP address. For STATIC IP, press UP or DOWN button to move the cursor among the digits, you can press LEFT and RIGHT buttons to modify the digits, press enter to save you change.

WEB SERVER PORT: the WEB transmit port for data. Default is 0080.

NETWORK ENV: the DVR has three types of different network conditions: LOCAL, EXTER_LAN, and EXTER_WAN. If in local network, please select LOCAL. If for internet use, please choose EXTER_LAN. If the internet condition is not very good, please select EXTER_WAN.

VIDEO PORT: the video transmit port for the computer. Default is 5000.

COMMAND PORT: the command transmit port for the computer. Default is 5001.

If you change any of the VIDEO PORT and COMMAND PORT or MAC address, you have to restart the DVR before you use the “net viewer” software.

Notice: if you have changed the MAC address, you will not have access to the “MAC ADDR SET” Option.

5.5.1. N/W ENABLE SET

When the cursor moves to N/W Enable, press the Enter button, and the N/W Enable setup window will appear.



If one channel here set OFF, this channel will not transmit to the network, so if you want to see a channel from network, you must to set this channel ON.

5.5.2. MAC SET

When the cursor moves to Mac Set then press the Enter button, the Mac Set window will appear.



If you have more than one DVR in a local area network, you have to set each DVR to have an exclusive MAC address, but remember that **you have only one chance to modify the MAC address**, once you have changed the MAC address, this menu will not appear again. If you want to change the MAC address again, please load the factory set, then you can change the MAC address. For MAC address, you'd better set the first two bytes to "00 00", and change other bytes.

5.6 SENSOR SETUP

When the cursor moves to Sensor Set, then press the Enter button, the sensor setup window will appear. Press UP or DOWN button to move the cursor. Press LEFT or RIGHT to change the value.



ALARM ENABLE: alarm trigger switch, can be set to off, N.C(normal closed) or N.O(normal open).
If users set it to off, the DVR will ignore the alarm input.

MOTION ENABLE: Motion alarm switch, can be set to ON or OFF. If set to off, the DVR will ignore the motion alarm.

MOTION LEVEL: motion sensitivity level, if the figure in the picture is small, please set to high or very high, default is normal.

BUZZER TIME: buzzer sound time when there is a sensor or motion alarm.

SENSE RECTIME: when a motion or sensor alarm is triggered, the recording time of DVR, default is 10 seconds.

Notice: Users should press the schedule button after setting up the parameters to activate the settings.

5.6.1 Motion Detection settings

1) When surveying nearby objects (2-10 meters)

When in daytime, please set motion detection sensitivity to Normal level; when in night, please set to low.

2) When surveying objects in 50-100 meters area

The objects 50-100 meters away will be quite small on the screen. When in daytime, please set motion detection sensitivity to high level.



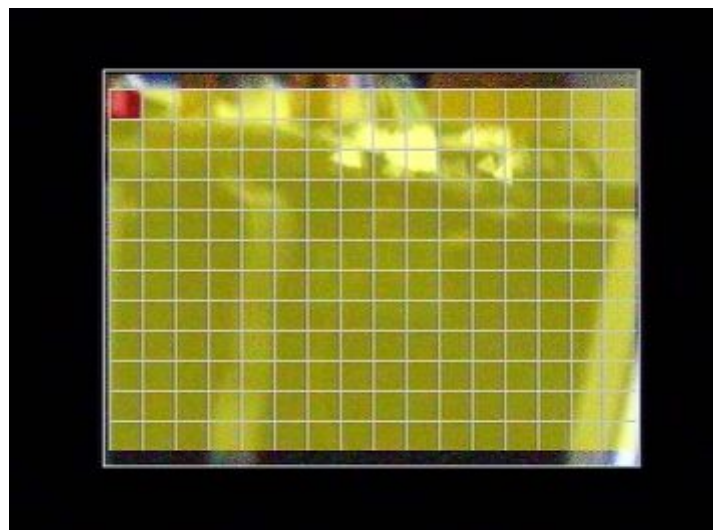
When in night as below, please set to normal level.



Note: the above suggestions are a guide only based on testing in a general environment. You will need to select the best parameters according to the actual operation environment you are covering. Try different settings until you get the desired motion detection result.

5.6.2 MOTION AREA SET

Move the cursor to Motion Area Set, then press the Enter button, and the area setup window will appear. Press the up, down, left, right button to move the cursor and press the Enter button to change from detection ON to OFF. Press and hold the Enter button to change all values to the same as the area you have selection.



If the area marker icon is set to yellow, this area is monitored for motion detection, and if the icon is blue, motion sensing is disabled for that area.

5.7 SCHEDULE SET

When the cursor moves to Schedule Set, press the Enter button, and the schedule setup window will appear.



You can change a recording schedule during a day by using this setup window.

Please note: Military time must be used.

START: start record time

STOP: stop record time

SCHEDULE ENABLE: must set to "on", if want to enable schedule record function

Note: Manual record mode and schedule record mode (including motion detection record mode, sensor record mode and time schedule record mode) can not be used at the same time. Once the user selects Schedule record mode, manual record mode will be disabled; once user select manual record mode, schedule record mode will be disabled.

5.8 USB BACKUP

Set the USB BACKUP.

Plug in the USB device, and press "ENTER" button, you can see the below picture.



There are two types of backup mode: STILL and MOVIE, in STILL mode you can backup Picture and in MOVIE mode you can backup video.

5.9 STORAGE INFO

When the cursor moves to Storage Info, press the Enter button, and the storage info window will appear.



MODEL: Model Number of the Hard Disk

CAPACITY: Total capacity

USED SIZE: Space used

OVER WRITE: The number of times overwritten

5.10 PTZ SET

When the cursor moves to PTZ Set, press the Enter button, and the PTZ Set window will appear.



You must set the correct protocol so you can control a Pan Tilt camera (Speed Dome) via the DVR. Press the UP or DOWN button to move the cursor, and press LEFT or RIGHT to change the value.

CHANNEL SEL: If you have a speed dome camera, select the channel which the camera is connected to.

BAUD RATE: Changeable from 1200bps to 115200bps. The default value is 2400bps.

DOME ADDR: The address of the speed dome camera, changeable from 0x00 to 0xff.

PROTOCOL: The protocol of speed dome camera: PELCO-D, PELCO-P, NEON, SAMSUNG

6. Quick User Guideline

6.1 Start the DVR

Before starting the DVR, please make sure all the items in the "**Security Notice**" at the beginning of this manual are fulfilled and that the input and output cables are all correctly connected.

Also ensure the DVR's video input format (NTSC/PAL) and the monitor (NTSC/PAL) are both set to the same video standard. NTSC for USA & Canada, PAL for Australia, UK and most of Europe.

Fit the hard disk to the removable caddy and insert the removable caddy into the housing, then lock it up (turn the hard disk lock to the right) and connect the power which will then boot the DVR and it will start to work.

6.2 Turn off the DVR

Only turn off the DVR when the system is inactive. Do not to turn off the DVR while playing or doing the System Setup. Turning off the DVR while recording may cause the recording to corrupt, and can cause the HDD to be unreadable in some cases.

Press the Record button to stop recording or press Stop button to stop playing or exit from System Setup menu, then turn off the power.

If do not wish use the video recorder for a long time, you should pull out the power line from the electrical outlet and store the unit where it will not be damaged.

6.3 Normal Recording

Connect the power to all related equipment; ensure that there is video input using direct connection to your TV or VCR. Press the Display button to check spare space of the hard disk, if there is not much space, please consider changing your hard disk first or select Overwrite mode.

Check recording parameter setup before recording; select video quality, frame rate. Note that you cannot change record setting during the process of recording. Manual recordings are the normal recording condition. Under the manual mode (non-schedule status),

pressing the Record button will record all channel's video. Press the Record button to begin recording, four channels will start simultaneous recording. While in normal recording mode, press the Record or Stop button, and enter the right password, to stop recording. During the process of recording if the hard disk is full and the system is set to automatic overwrite, the recording will not be interrupted but the DVR will automatically begin to overwrite recorded video from the earliest (oldest) recorded area. If the system is set to overwrite disabled, it will stop recording once the HDD is full.

6.4 Alarm Recording

Alarm recording is not started by manually pressing the Record button, it is automatically activated once Schedule mode is enabled. Alarm recording can be activated by alarm input signal or motion, if the connection of alarm input equipment is correct, stable and reliable, and the alarm settings are correct. For recording to be activated by exterior input signal or motion detection the system must be set to Schedule Mode active and that period is set to "A" in Record Schedule setup. You must also set the menu of Alarm Setup for exterior input alarm, and the alarm enable setting of that channel must be set to "ON". For Motion Alarm, the motion enable setting of that channel must set "ON", and set the area for motion detection must be set. If Schedule mode is disabled the system will not start recording on alarm. Setting schedule on or off is achieved through pressing the SCHEDULE button on the front panel or remote, but not through the System Setup menu and window. When the unit is in Schedule Mode active, the character "S" will display on the screen. Alarm video recording can't be stopped by pressing the RECORD or STOP button while Schedule Mode is active. To ensure that once Schedule Mode is set to on that the schedule cannot be accidentally stopped there is a password protection to stop Schedule Mode. You must press the SCHEDULE button then enter the correct password to turn Schedule Mode off. Check Alarm Recording setup before recording; confirm the video quality and the frame rate, as the record setting can't be changed during the recording process. As long as the alarm input signal is correctly set the alarm recording will continue during the period of time set up by A/M REC TIME, and when the outside the time period the alarm recording automatically stops.

6.5 Time Recording

Time recording starts and stops recording automatically according to the pre-arranged time period. It is applied to a fixed timetable, for example business hours time recording (or outside business hours time recording) with fixed start/stop time. To start the Time Recording function you must have a record schedule setup beforehand. When this is done, press the SCHEDULE button on the front panel to set schedule mode to on and the schedule symbol "S" will display on the screen. The Time Recording mode will not work unless you activate Schedule Mode. To make Time Recording mode active the system must be set to Schedule Mode active and that period is set to "T" in Record Schedule setup. In Time Record mode, you must press the SCHEDULE button then enter the password to stop time recording. Because Time recording is reliant on the system being set with the correct time, you must adjust the time to your correct local time before using this function.

6.6 Playback

Press the PLAY button and the system will begin to play the images recorded from the start of the most current recording.

If the recording is playing, press the PAUSE button to pause playing, press the PLAY button again to resume normal play.

To use Fast Forward playing or Fast Backward playing, press the FWD or REW button while the

recording is playing to see faster playback. Press the PLAY button to return to normal speed playing from the current place.

Continuous pressing of the FWD button will change the fast-forward between four levels of speed (X2, X4, X8, X16,) in sequence. Continuously pressing the REW button will change the fast backward playback between four levels of speed (X2, X4, X8, X16) in sequence.

During playback mode, press the Single Frame Forward button to play a frame at a time, and hold the button in to continually play one frame at time while the button is hold.

During playback mode, press the Single Frame Rewind button to play back a frame at a time, and hold the button in to continually play one frame at time while the button is hold.

Press the PLAY button again to resume normal playback speed, or press the STOP button to stop playing.

6.7 Search Play

Press the search button to display the Search play window on the screen.



TIME SEARCH: search recording by the time entered.

EVENT SEARCH: search recording by event list.

RECORD SEARCH: search recording by segment.

Press the UP or DOWN button to move cursor, then press Enter button to enter sub menu you have highlighted. Press the Search button again to quit from search menu.

6.8 Time Search

Move the cursor to Time Search, then press the Enter button and the Time search window will appear, which is illustrated as below.



The red block below the number means there is recorded video at that time.

Press the LEFT and RIGHT buttons to move the cursor along the year, month, day, hour and minutes.

Please note: You can only view footage that has been recorded. Therefore you must select time and dates that have a red block below them.

6.9 Event Search

Move the cursor to Event Search, and then press the Enter button, the event search window will appear, which is illustrated as below.

There are four types of event on this list: MOTION, ALARM, SCHEDULE and NETWORK. MOTION means motion triggered alarm recording.

ALARM means external sensor triggered alarm recording.

SCHEDULE means scheduled time recording.

NETWORK means network activated recording.

Press the UP and DOWN buttons to move the cursor along the event list, and press the Enter button to play the segment you selected. Press the search button to return to the Search menu.



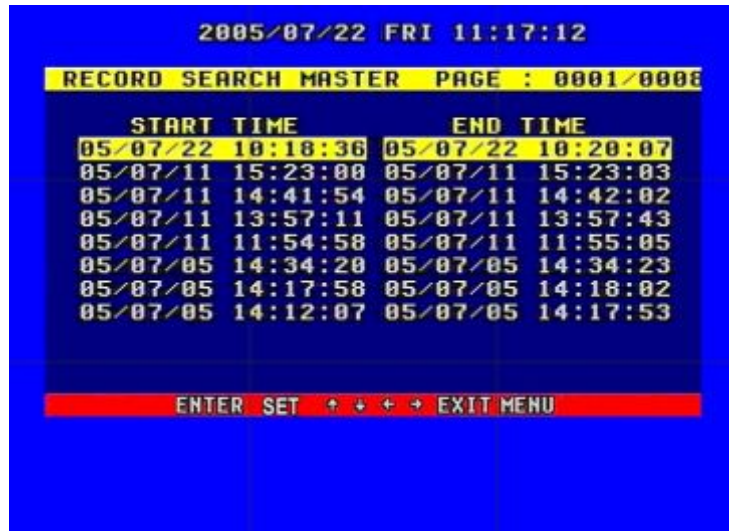
If you want to search from MASTER HDD to SLAVE HDD, press the **SEARCH** button, and then press Enter button. Press the Menu button to exit.



6.10 Record Search

Move the cursor to the Record Search, press the Enter button, and the record search window will appear, which is illustrated as below.

All recorded segments are displayed here, press the up or down button to move the cursor along the segment list, press left or right buttons to see previous or next page, press the Enter button to play the segment you selected. Press search button again to return to the Search Play menu.



If you want to change it from the MASTER HDD to the SLAVE HDD, press the SEARCH button, then press Enter button. Press the Menu button to exit.

6.11 USB Backup

If you want to use this function, the first step is to format USB device with "FAT" system on your computer.

NOTE: the DVR doesn't support "FAT32" file system.

Plug in the USB device, go to the menu of Backup set, check whether the USB device was detected, and there is enough free space of the USB device, select the backup mode, then completely exit the menu system. USB backup is available only in playback mode.

If you selected "STILL" for the backup mode, press the USB button and an "S" will appear on the screen. When it disappears, the backup of the picture is finished, and you can un-plug the USB device out and see the picture on a computer with the netviewer software.

If you select "MOVIE" for the backup mode, press and hold the USB button until the "A" appears on the screen, press the USB button again to select the end of the backup video. This may take a little time, and make sure the USB device has enough free space, if the "A" disappears, the backup is ok, and you can view the video on a computer with netviewer software.

NOTE: if you backup still picture, please choose full picture display.

We recommend using high quality USB thumb drives that we provide

6.12 USB Update

Using your PC to create a folder called “firmware” in the root directory of your USB memory stick, copy the update files to the folder. Plug the USB device into the DVR, go to the menu of Backup set, check that whether the USB device was detected, go to the Firmware Update menu and select USB method, move to Update Start and press Enter button and the update will start. If you see screen below, update was successful. Then reboot the DVR.

NOTE: Do not shut down the DVR when the DVR is updating, it may damage the system.



6.13 Zoom Operation

In shift mode, press zoom button, the DVR will be in zoom mode, which is illustrated as below. Press upward, downward, leftward or rightward to move the zoom area, and then press enter button to zoom, press zoom button again to cancel zoom operation.



6.14 Information Display

In shift mode, press display button, the main information of the DVR will display on screen.



HDD SIZE: the size of the hard disk

HDD USED: the used space of the hard disk.

HDD READ: current HDD address for playback

OVERWRITE: overwrite time of the HDD

NETWORK IP: IP address of the DVR.

REC LIST: number of record list

EVENT LIST: number of event list

REC OVER: record list overwrite or not

EVENT OVER: event list overwrite or not.

S/W VER: software version

6.15 PTZ Operation

This DVR can control all speed domes which are connected to the DVR.

To control the speed dome, make sure all the lines are correctly connected, first you must set the right protocol, baud rate, and speed dome's address for each speed dome, please refer to protocol set. For example, you connect the first speed dome to channel one, you should make sure that the baud rate, the protocol, and speed dome's address is the same as the speed dome you connect to the channel. Press the PTZ button on the front panel or remote controller, "PTZ" will be displayed on the screen, then select 1 to 16 to choose PTZ channel, the channel number will be displayed after "PTZ", please refer to the picture below:



You can press up, down, left, or right buttons to move the speed dome, and press the Enter button to stop. If you press the Iris button, the character "Iris" will appear on the screen, please refer to the picture below, then you can press the "ADD" and "DEC" button to change the Iris, the same to control the focus, zoom, and speed, also press enter button to stop.

Note: When DVR is in PTZ mode, "REC" button is used as "ZOOM"; "PLAY" button is used as "IRIS"; "REW" button is used as "FOCUS"; "FWD" button is used as "SPEED". "ADD" and "DEC" buttons are used to adjust the value.



Press the PTZ button one more time to exit from PTZ control.

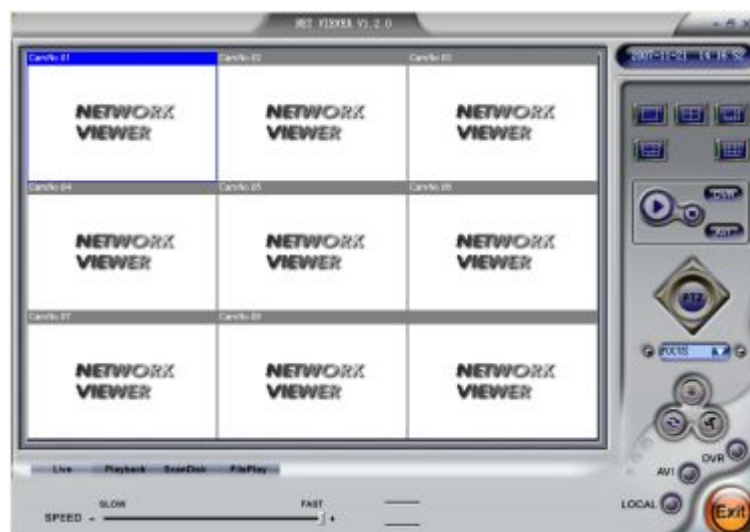
6.16 REMOTE CONTROLLER




- REC:** Start or stop recording
- SCHEDULE:** Start Schedule recording function
- 0~9:** Select channel or input password
- 2x2:** Display Quad mode on screen
- 3x3:** Display 9-channel cameras on screen
- 4x4:** Display all 16-channel cameras on screen
- AUTO:** Same with “Auto” button on DVR keyboard
- DISPLAY:** Same with “Display” button on DVR keyboard
- MENU:** Same with “MENU” button on DVR keyboard
- W/M:** Same with “W/M” button on DVR keyboard
- SEARCH:** Same with “Search” button on DVR keyboard
- CH +/-:** Change channel
- SET+/-:** Select channel, address, or speed while in PTZ function
- ▶▶** Forward button
- ◀◀** Backward button
- ▶■**: Move one frame picture forward in **Pause** mode
- ◀**: Move one frame picture backward in **Pause** mode
- ZOOM:** Same with “Zoom” button on DVR keyboard
- FREEZE:** Same with “Freeze” button on DVR keyboard

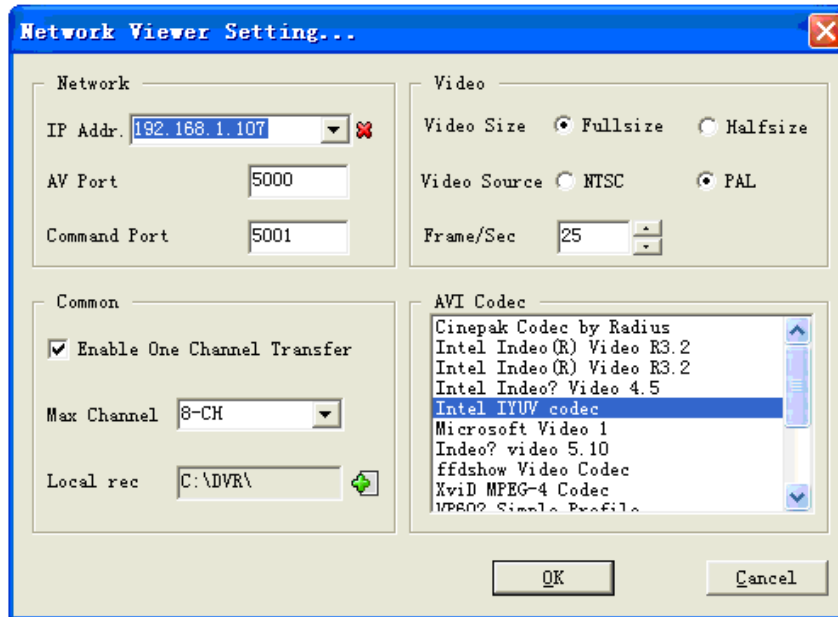
7. USING THE NETWORK VIEWER

Using the net viewer software, you can view the DVR through Internet or Intranet, also, you can view and backup the video data on the HDD through a computer. Open the software; you will see the window below:



7.1 Setting

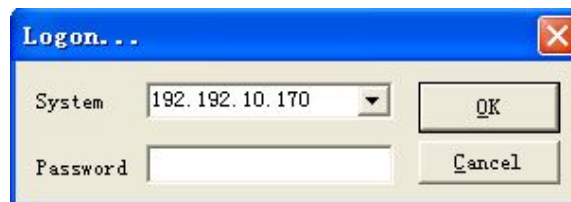
Please click  button, you will see the window below:



Enter the IP address and click "OK" button.

7.2 Viewer connect

Press  button, you can see the login box. Enter the correct password and click ok to login DVR.



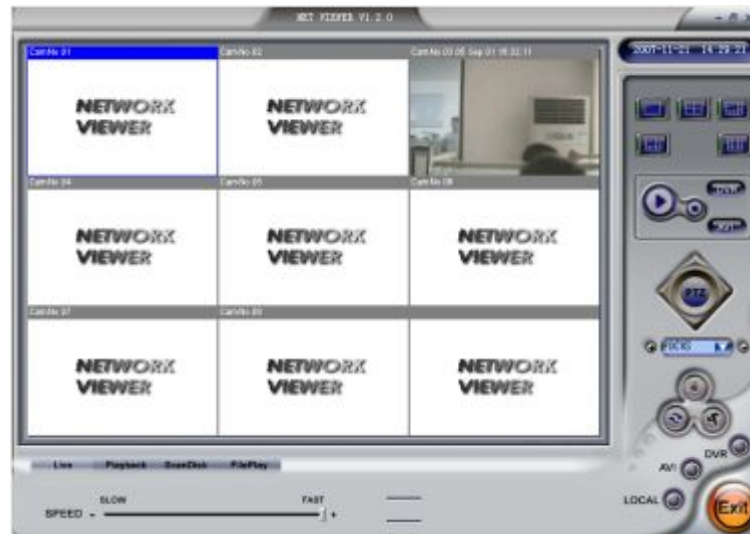
<Connect success>



<Connect fail >

7.3 Live play

Click play button to see live picture,



7.4 Playback


After clicking “Playback” tab, net search window will display. First, you have to select the HDD of the DVR. Click the “Get record list” or “Get event list”, if the DVR has record list, you can see the window below:



Index	Start time	End time	LBA
0	06/02/22 13:45:47	06/02/22 13:46:51	0x0001...
1	06/02/22 13:46:51	06/02/22 14:01:54	0x0001...
2	06/02/22 14:01:55	06/02/22 14:02:02	0x000a...
3	06/02/22 14:02:05	06/02/22 14:26:19	0x000a...
4	06/02/22 14:26:21	06/02/22 14:26:26	0x0018...
5	06/02/22 14:26:26	06/02/22 14:26:28	0x0018...
6	06/02/22 14:26:29	06/02/22 14:26:31	0x0018...
7	06/02/22 14:26:32	06/02/22 14:26:33	0x0018...
8	06/02/22 14:26:35	06/02/22 14:27:10	0x0018...

Double click the record list; you can see the playback video. The event list operation is the same as record list operation.

7.5 Scandisk

Connect the HDD that used in the DVR to a PC and then select Scandisk, Scandisk window will display, click  and select one HDD, then you can play all the video on the HDD.



<Scandisk Menu>

7.6 File Play

Press "FilePlay" button, you can see the below picture, press the "open" button play the video file on the computer.

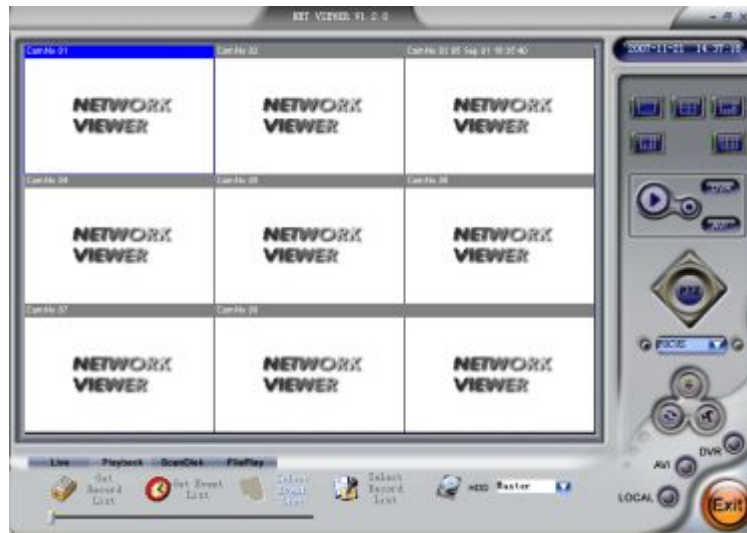


< Fileplay Menu>

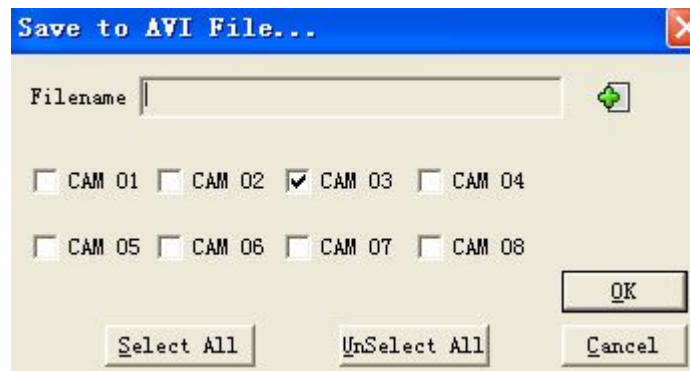


1. Pressing the button, you can record the video by you computer.
2. Pressing the button, you can See the below picture.
3. Pressing the button, you can stop the record DVR.
4. Pressing the button, you can remote the DVR record to the HDD.

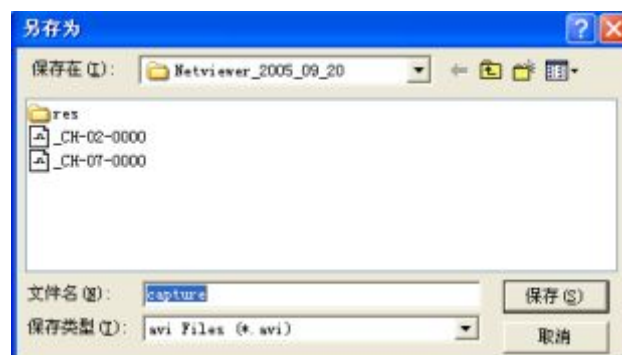
7.7 Save to AVI



To record the video to your PC's HDD with ".avi" file system, just click "AVI" button, and the following window will pop-up



Here, select the record channel and click "+" icon to define the file name and save path and click "ok" to start the AVI save.



Re-press the "AVI" button to stop the AVI record.

7.8 Save to DVR

To record the video stream to your PC's HDD , just click" DVR" button and the video stream will be saved in the directory that you set (the default directory is c:\DVR\)

Note: to play the file saved to DVR, just click "FilePlay" tab to open it.

7.9 PTZ Control

To control the speed dome, just click "UP","DOWN","LEFT" and "RIGHT" buttons to control speed dome's horizontal or vertical position. Also, you can control speed dome's Iris, Focus and Zoom , just to select the item and then click the "+" and "-" icons.

8. Main standard & parameter chart

Item	Specification
Compressed picture	M-JPEG
Video signal	NTSC/PAL
Video input	Composite:1.0Vp-p/75Ω,BNC×16
Video output	Composite:1.0Vp-p/75Ω,BNC×2 S-VIDEO
Audio input	-8Db 22KΩ,RCA connector×4
Audio output	-8Db 3KΩ,RCA connector×2
Alarm input	16
Alarm output	1
Record time	18-1680 hours/40G
Electron clock	Year/Month/Day; Hour/Minute/Second
Secrete function	Password protection
Update	USB
Power source	DC12V 5A
Environment temperature	Work temperature:+5°C~+70°C;humidity:<90% store temperature-20°C~+70°C;humidity:<95%
weight	5.3kg(include power supply)
Exterior size	430mmX400mmX90mm

9. Trouble shooting guide

Q. What kind of camera should I buy for this DVR?

A. Any BNC or RCA interface indoor/outdoor/infrared camera will work with the DVR. It doesn't matter whether it's a color or black/white camera. However, web cameras that require a USB interface are not compatible with the DVR.

Q. What kind of alarm device should I buy for DVR?

A. Most sound alarms are compatible with our DVR.

Q. I can't turn on DVR.

A. Make sure that the power cord is plugged in correctly and the power light on DVR front panel is on.

Q. I see nothing but a blue screen after I turn on DVR.

A. Check the camera input and video output connection on DVR back panel. If you can't find problem with these connections, check whether the camera power cable is firmly connected. Make sure the system format for NTSC and PAL is right.

Q. Can I prevent other people from stopping the recording while I am gone?

A. If the DVR is in schedule or recording mode, set password "on" in menu setup, no one can change the set unless he has the right password.

Q. How can I erase all data on the hard disk drive?

A. Select "HDD Format Set" option in the menu.

Q. Can my desktop PC read the video data on hard disk drive in DVR?

A. Yes, you can use our software to read all video data on hard disk.

Q. What happens if I install my PC hard disk drive into the DVR?

A. You can use a PC hard disk drive in the DVR. However, once it runs in DVR, it will delete any PC operation system and files on the hard disk drive.

Q. What kind of hard disk drive should I purchase to make the DVR run?

A. Any PC compatible IDE, ATA hard disk drive will work.

Q. What is the capacity to record?

A. Up to a year with two 120 GB HDD at the lowest quality setting when set at 1 frame per second.

Q. Does this DVR come with a remote control either hardwire or wireless?

A. Yes, there is a remote control come with the DVR.

Q. Why cannot I access Time/Date Set, HDD Format Set, Record Set menu?

A. Please stop record or play before you access these menu.

Q. Why cannot I access Network Set menu?

A. Please stop the connection of the PC View soft from Internet before you access Network Set menu.

Q. I press record button, but the DVR does not start recording, why?

A. Press display button to see if there is a hard disk detected, also if the DVR is in schedule mode (there is a "S" on the screen in yellow), you cannot start recording by press record button, you have to press schedule button again to cancel schedule mode.

Q. I press record button while recording, but the DVR does not stop recording, why?

A. If the DVR is recording in schedule mode (there is a "S" on screen), you cannot stop recording unless you quit schedule mode first. Press schedule button to cancel schedule mode.

Q. There is a movement, but the DVR does not start recording.

A. Make sure the motion enable of that channel is on, the area set is ok, the A/M rec time is not set to off, and the DVR is in schedule mode. Otherwise set the motion level to HIGH or VERY HIGH.

Q. When the network connection between DVR and client computer is cut off, why the DVR halts and clock stops?

A: In case network is cut off abnormally, DVR machine will halts for 20 seconds without response to any operation of pressing front panel buttons. 20 seconds later, it will restore normal state, but the icon that shows network status won't disappear in 10 minutes and in this period client computer cannot connect to the DVR or enter network menu.

Q. I long press the "Menu/search" button, but it do not display password menu, and directly enter the menu, why do not I need a password?

A. If the password level setup in Password Setup is "NO USE", you do not need a password to enter the menu, if you want to need a password when enter menu setup, just change the password level to "SETUP".

Q. I press the menu button, but it does not display the password menu to enter menu, why?

A. To enter menu, you have to long press the "Menu/search" button, if you just press this button, you will see the search menu.

Q. How do I change the On Screen Display (OSD) language on the DVR?

A. You can change the OSD language from the default English to German, French, Italian, Polish, or Spanish by following the steps below.

To change the OSD language, enter the menu system by pressing the MENU button on the front of the DVR and correctly input your password.

Highlight the "SYSTEM SET" option, and press the ENTER button.

Select "LANGUAGE SET" and press the ENTER button.

Press the LEFT or RIGHT buttons to change the language and press the ENTER button to select your language.

Now fully exit the menu system and restart your DVR.

10. Record Time Table

Rec rate field/sec	Picture quality	Resolution	Recording time
60 fps	Very high	720	47 hours
60 fps	Low	720	125 hours
120 fps	Normal	360	47 hours
1 fps	Normal	720	4500 hours

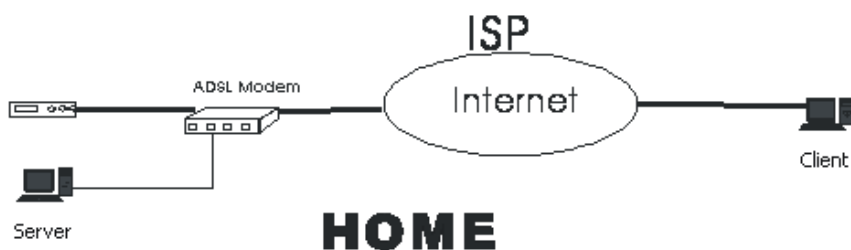
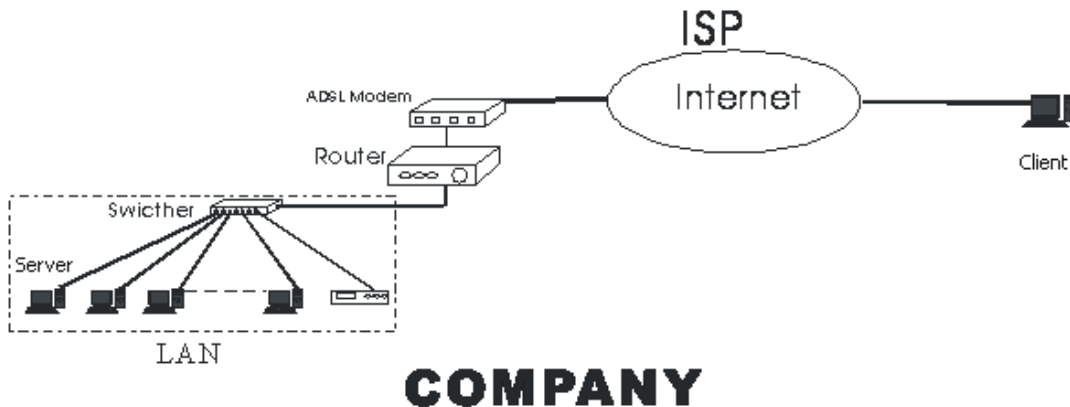
Note: The above figures are from our test with a 250GB hard disk. Just for users' reference. Different definition and stabilization (objects' movement) of the images will make some kind of different results.

11. Internet View/Playback Configurations

11.1 About Networks

Users will generally use the following network types and hardware:

- 1): Local Area Network (LAN): An internal network usually operated via a hub, a switch, or a router and will usually operate within an office or household via wireless or Ethernet cable connections.
- 2): DSL (or ADSL): This is a specific type of broadband Internet access obtained by connecting a DSL or ADSL modem (or modem/router) to a normal telephone cable, and setting up an Internet account with an Internet Service Provider (ISP) such as AT&T or AOL.
- 3): Port Forwarding: This allows external connections to pass through security settings on routers and firewall devices. Ports need to be allowed in, and then directed to the specific IP address of the computer or device that the connection is intending to reach.
- 4): Router: This is a device that connects 2 separate networks (most commonly a LAN to the Internet) and comes with built in security options and allows multiple devices to connect to a LAN and gain Internet access (if the router is connected to a modem).



11.2 Network Configurations

After connecting to Internet, DVR users should make the following configurations to make remote view/playback.

- 1): When in LAN, network administrators should open the following ports for specific computers: 5000- 5002. Please make sure that the other services don't use the same ports.
- 2): In case users use ADSL network and the surveillance system computer connect to the ADSL MODEM, then the ports have all opened by default. If not, please close fire wall by guidance of the ADSL MODEM user's manual.

3): In case you connect to Internet by proxy server, users should utilize port mapping software and open ports 5000, 5001, and 5002 for the surveillance computer.

4): In case users connect to Internet by router, then users should add the IP address of the surveillance computer and open the above mentioned ports in DMZ setup or Virtual Server setup (the names maybe different in various other kinds of routers) of the router.

5): For CABLE MODEM type and ADSL MODEM type, the configurations are similar to the images below:

Home **Advanced** **Tools** **Status** **Help**

Virtual Server
Virtual Server is used to allow Internet users access to LAN services.

Enabled Disabled

Name:

Private IP:

Protocol Type:

Private Port:

Public Port:

Schedule: Always

From: time : AM to : AM day to

Virtual Servers List **Apply** **Cancel** **Help**

Name	Private IP	Protocol	Schedule
<input type="checkbox"/> Virtual Server FTP	0.0.0.0	TCP 21/21	always
<input checked="" type="checkbox"/> Virtual Server HTTP	192.168.2.99	TCP 80/80	always
<input checked="" type="checkbox"/> Virtual Server HTTP1	192.168.2.100	TCP 80/88	always
<input type="checkbox"/> Virtual Server DNS	0.0.0.0	UDP 53/53	always
<input checked="" type="checkbox"/> Virtual Server SMTP	192.168.2.99	TCP 25/25	always
<input type="checkbox"/> Virtual Server POP3	0.0.0.0	TCP 110/110	always
<input type="checkbox"/> Virtual Server Telnet	0.0.0.0	TCP 23/23	always
<input checked="" type="checkbox"/> LAN DVR	192.168.2.167	TCP 5000/5000	always
<input checked="" type="checkbox"/> ssh	192.168.2.99	TCP 22/22	always
<input checked="" type="checkbox"/> LAN DVR	192.168.2.167	TCP 5000/5001	always
<input checked="" type="checkbox"/> LAN DVR	192.168.2.167	TCP 5000/5002	always

Firewall Rules

Firewall Rules can be used to allow or deny traffic from passing through the DI-624.

Enabled Disabled
 Name:
 Action: Allow Deny

Interface	IP Range Start	IP Range End	Protocol	Port Range
Source: <input type="text" value="WAN"/>	<input type="text" value="*"/>	<input type="text"/>		
Destination: <input type="text" value="LAN"/>	<input type="text" value="192.168.2.167"/>	<input type="text"/>	<input type="text" value="TCP"/>	<input type="text" value="5000"/> - <input type="text" value="5001"/>

 Schedule: Always
 From time : to :
 day to



Firewall Rules List

As ADSL and CABLE MODEM network users usually use dynamic IP address, so once the MODEM restarts, the IP addresses will change. For this situation, users should apply for DNS services.

To use the Swann DVRs with remote viewing capabilities you may have to “open” ports on your Windows® Firewall, your Software Firewall or on the Broadband Router/Modem that you use to connect to the Internet. Please consult the documentation or help files on the relevant software or system for instructions on how to do this. To successfully access your cameras from the Internet you will need to have allowed access to and from the following ports from an outside connection. This process is also called “Port Forwarding” or creating a “Virtual Server” connection.

For more information on Port Forwarding, please visit www.portforward.com

Once you have correctly forwarded the ports, please check to see what your external IP address is (this cannot start with 192.168.x.x). You can check this by going to <http://www.whatismyip.com> (note: you must do this on the server machine to find the correct external IP of the router.)

You may also have to place the IP address of the Swann DVR in the “DMZ” of your Firewall to enable the remote viewing interface. Information on how to do this should be detailed in the documentation covering operation of your Firewall.

As ADSL and CABLE MODEM network users usually use a dynamic IP address, once the MODEM restarts, the IP addresses can change. Users can opt for a static IP address which does not change by contacting their ISP. Otherwise users can apply for a DNS service through www.no-ip.com or www.dyndns.com

Q-SEE Product Warranty

Thank you for choosing our products.

All of our products users have a conditional free warranty repair service for hardware within 12 months starting from purchase date, and a free exchange service within one month (valid for manufacturing defects). Permanent upgrading service is provided for the software.

Liability Exclusions:

Any product malfunction, abnormalities in operation or damage caused by following reasons are not within the free service scope of our company. Please select payable service.

- (1) Equipment damage caused by improper operation
- (2) Improper environment and conditions in/on which the equipment operates, e.g., improper power, environment temperature, humidity and lightening strike etc. that cause equipment damage.
- (3) Damage caused by acts of nature: earthquake and fire etc.
- (4) Equipment damage caused by the maintenance of personnel not authorized by our company.
- (5) Product sold over 12 months ago.

In order to provide various services to you, please complete registration procedure after you purchase the product. Cut off or copy User's Information Card and fax or mail it to us after the card is filled in. You can also register the product by going to the www.q-see.com website and clicking on the Register link.

If you have questions:

Contact Us:

Mailing Address:

DPS Inc.

8015 E. Crystal Dr

Anaheim, CA 92807

Website:

<http://www.q-see.com>

Fax:

714-998-3509

Customer Service:

Phone: 877-998-3440 x 538

Email: cs@dpsi-usa.com

Tech Support:

Phone: 877-998-3440 x 539

Email: ts@dpsi-usa.com

Customer Information Card

User's Name	Mr./Mrs.
Company Name	
Postal Address	
Postal code	
Phone Number	
E-mail	
Model Number of Product	
Serial Number of Product	
Purchase Date	
Distributor	

The material in this document is the intellectual property of our company.

No part of this manual may be reproduced, copied, translated, transmitted, or published in any form or by any means without our company's prior written permission.

1. Our products are under continual improvement and we reserve the right to make changes without notice. But no guarantee is given as to the correctness of its contents.
2. We do not accept any responsibility for any harm caused by using our product.
3. The product picture may differ from the actual product, which is only for your reference. The accessories will probably be different according to the different selling areas. For details of accessories, please refer to your local distributor.

Copyright reserved